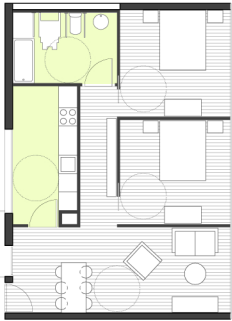


vivienda tipo A



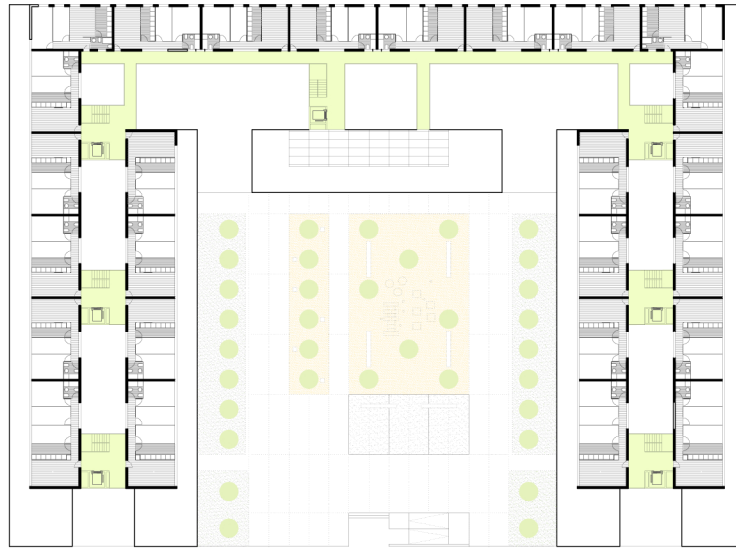
vivienda tipo C



vivienda adaptada



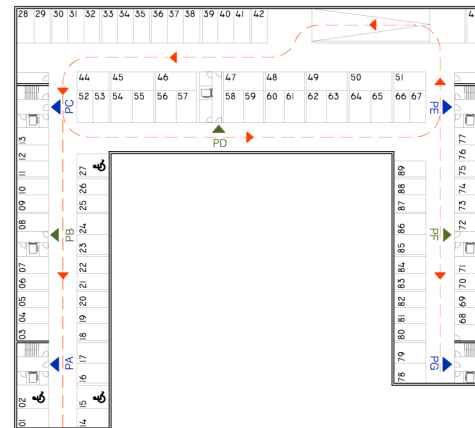
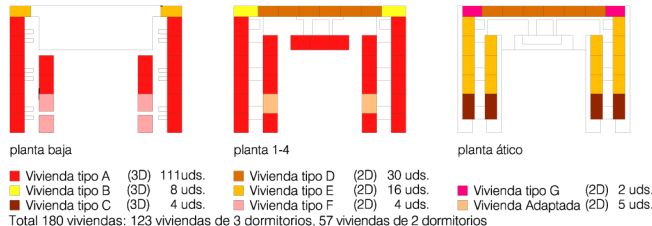
planta baja



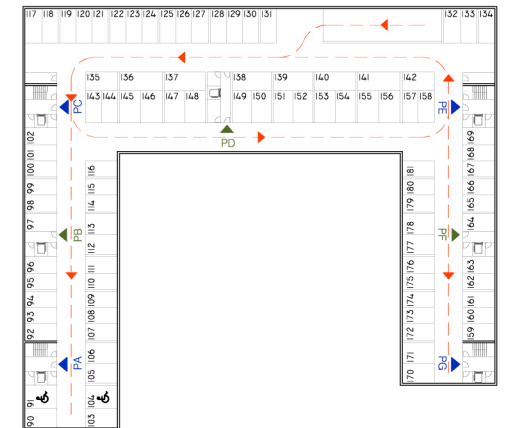
planta ático

| VIVIENDAS | VIV. TIPO A | VIV. TIPO C | V.ADAPTADA |
|---------------|----------------------|----------------------|----------------------|
| Salón-comedor | 20.30 m ² | 18.20 m ² | 20.00 m ² |
| Cocina | 7.20 m ² | 8.70 m ² | 9.40 m ² |
| Dormitorio 1 | 12.50 m ² | 12.50 m ² | 12.70 m ² |
| Dormitorio 2 | 9.45 m ² | 10.20 m ² | 12.50 m ² |
| Dormitorio 3 | 9.45 m ² | 10.20 m ² | 10.20 m ² |
| Baño | 4.00 m ² | 3.70 m ² | 7.70 m ² |
| Pasillo | 5.00 m ² | 6.50 m ² | 5.60 m ² |
| Tendadero | 2.10 m ² | comunitario | 2.10 m ² |
| Total | 70.00 m ² | 70.00 m ² | 70.00 m ² |

Nota: información del resto de tipologías en memoria justificativa.



sótano -1: 89 plazas de garaje
(PA-PC-PE-PG salidas de emergencia)



sótano -2: 92 plazas de garaje
(PA-PC-PE-PG salidas de emergencia)